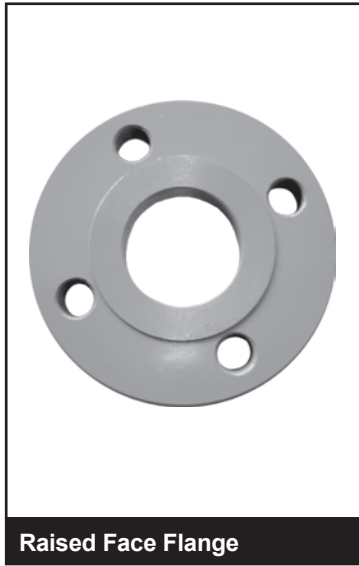
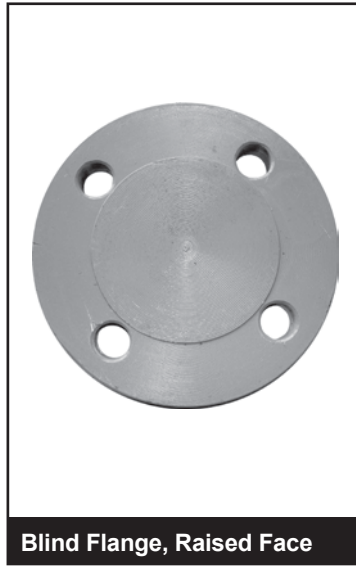


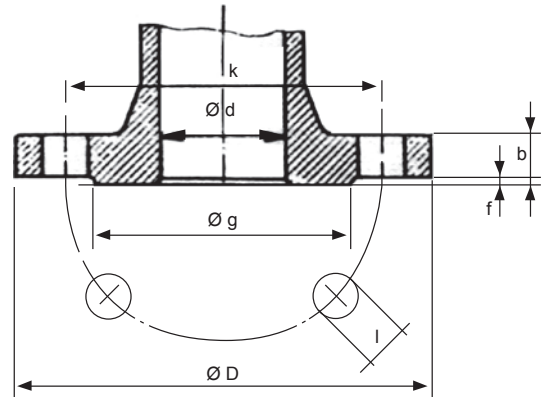
FLANGE DIN STANDARD



Raised Face Flange



Blind Flange, Raised Face



d - Nominal bore
 b - Flange thickness
 l - Hole diameter
 g - Diameter of raised face
 D - Flange diameter
 k - Pitch circle diameter
 f - Height of raised face

Flange Dimension DIN Standard

Flange		ISO PN10								ISO PN16							
Dn	d	Dimension					Bolts			Dimension					Bolts		
mm		D	k	b	l	g	f	Nbr	Ø	D	k	b	l	g	f	Nbr	Ø
10	18	90	60	14	14	40	2	4	M12	90	60	14	14	40	2	4	M12
15	22.5	95	65	14	14	45	2	4	M12	95	65	14	14	45	2	4	M12
20	28	105	75	16	14	58	2	4	M12	105	75	16	14	58	2	4	M12
25	34.5	115	85	16	14	68	2	4	M12	115	85	16	14	68	2	4	M12
32	43.5	140	100	18	18	78	2	4	M16	140	100	18	18	78	2	4	M16
40	50	150	110	18	18	88	3	4	M16	150	110	18	18	88	3	4	M16
50	61.5	165	125	18	18	102	3	4	M16	165	125	18	18	102	3	4	M16
65	77.5	185	145	18	18	122	3	4	M16	185	145	18	18	122	3	4	M16
80	90.5	200	160	20	18	138	3	8	M16	200	160	20	18	138	3	8	M16
100	117	220	180	20	18	158	3	8	M16	220	180	20	18	158	3	8	M16
125	142	250	210	22	18	188	3	8	M16	250	210	22	18	188	3	8	M16
150	170	285	240	22	22	212	3	8	M20	285	240	22	22	212	3	8	M20
175	192	315	270	24	22	242	3	8	M20	315	270	24	22	242	3	8	M20
200	220	340	295	24	22	268	3	8	M20	340	295	24	22	268	3	12	M20
250	276	395	350	26	22	320	3	12	M20	405	355	28	26	320	3	12	M24
300	327	445	400	26	22	370	4	12	M20	460	410	30	26	378	4	12	M24
350	360	505	460	26	22	430	4	16	M20	520	470	30	26	438	4	16	M24
400	410	565	515	26	26	482	4	16	M24	580	525	32	30	490	4	16	M27

Flange		ISO PN25								ISO PN40							
Dn	d	Dimension					Bolts			Dimension					Bolts		
mm		D	k	b	l	g	f	Nbr	Ø	D	k	b	l	g	f	Nbr	Ø
10	18	90	60	16	14	40	2	4	M12	90	60	16	14	40	2	4	M12
15	22.5	95	65	16	14	45	2	4	M12	95	65	16	14	45	2	4	M12
20	28	105	75	18	14	58	2	4	M12	105	75	18	14	58	2	4	M12
25	34.5	115	85	18	14	68	2	4	M12	115	85	18	14	68	2	4	M12
32	43.5	140	100	18	18	78	2	4	M16	140	100	18	18	78	2	4	M16
40	50	150	110	18	18	88	3	4	M16	150	110	18	18	88	3	4	M16
50	61.5	165	125	20	18	102	3	4	M16	165	125	20	18	102	3	4	M16
65	77.5	185	145	22	18	122	3	8	M16	185	145	22	18	122	3	8	M16
80	90.5	200	160	24	18	138	3	8	M16	200	160	24	18	138	3	8	M16
100	117	235	190	24	22	162	3	8	M20	235	190	24	22	162	3	8	M20
125	142	270	220	26	26	188	3	8	M24	270	220	26	26	188	3	8	M24
150	170	300	250	28	26	218	3	8	M24	300	250	28	26	218	3	8	M24
175	192	330	280	28	26	248	3	12	M24	350	295	32	30	260	3	12	M24
200	220	360	310	30	26	278	3	12	M24	375	320	34	30	285	3	12	M27
250	276	425	370	32	30	335	3	12	M27	450	385	38	33	345	3	12	M27
300	327	485	430	34	30	395	4	16	M27	515	450	42	33	410	4	16	M30
350	360	555	490	38	33	450	4	16	M30	580	510	46	36	465	4	16	M33
400	410	620	550	40	36	505	4	16	M33	660	585	50	39	535	4	16	M36

