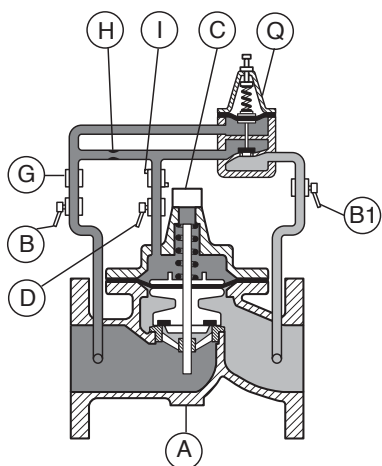


Applications and general characteristics

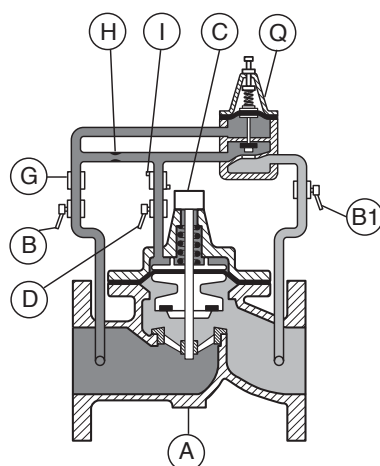
NB : Additional information is available on the data sheet listed as «Main valve».

- It controls and maintains a preset upstream pressure regardless of variations in flow rate.
- Equipped with non return valves, it closes automatically in case of backflow. (CL301C).
- Always mounted in line, it prevents the pump from reducing its suction pressure below the security point. It prevents also from exceeding the pumping capacity when the demand is higher.

Working principal



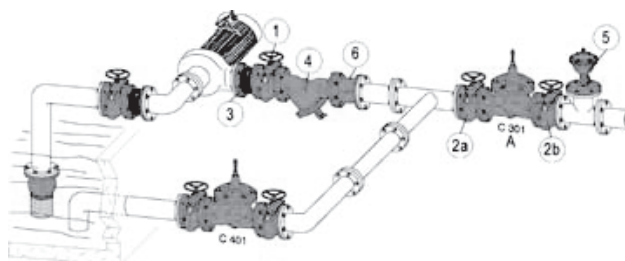
When upstream pressure is getting lower than the pressure required by the pilot Q, the pilot will close and limit the flow circulation. The upstream pressure pushes on the membrane of the main valve A which closes.



When upstream pressure increases, pilot Q will open and release the pressure from the membrane of the main valve A which opens.

Installation example and spare parts list

No	Description	Material
A	Main valve	Cast iron
B	Upstream isolation valve	Nickel plated brass
B1	Downstream isolation valve	Nickel plated brass
C	Drain cock	Brass
D	Chamber isolation valve	Nickel plated brass
G	Strainer	Brass
H	Orifice	Stainless steel
Q	Pilote valve CL301	Inox



No	Description
1	Isolation valve of the by-pass
2a - 2b	Isolation valves of the main water pipe
3	Rubber expansion joints
4	Filter

*last updated 03/16

