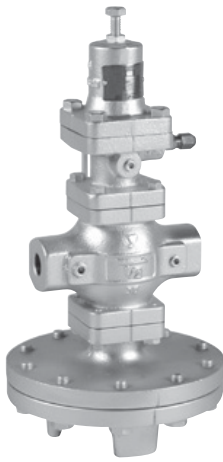
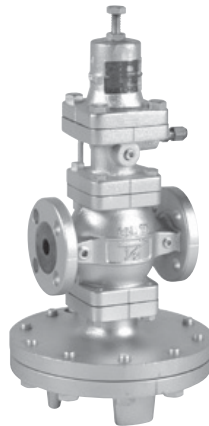


# GP-2000/GP-2000EN

- Pilot type
- Diaphragm
- External sensing
- Built-in strainer



Screwed type



Flanged type

### FEATURES

1. Large-size diaphragm and external sensing method control reduced pressure more stably.
2. Since the Cv value is high, flow capability and control capability are significantly improved, one or two sizes smaller than the regular nominal size can be applied.
3. Spherical main valve offers great sealability and great reduction of valve seat leakage (compliant with ANSI Class IV).
4. Pressure management at low pressure (0.02 MPa or less) is available.  
(GP-2000L)<sup>2</sup>

### SPECIFICATIONS

| Model                            |                  | GP-2000  |                                  | GP-2000EN ***                               |
|----------------------------------|------------------|--|----------------------------------|---|
| Application                      |                  | Steam  |                                  |   |
| Reduced pressure sensing method  |                  | External sensing *1                            |                                  |   |
| Inlet pressure                   |                  | 0.1-2.0 MPa                                    | 0.1-1.0 MPa                      | 0.1-2.0 MPa                                 |
| Reduced pressure                 |                  | 0.02-0.15 MPa<br>0.1-1.4 MPa *2                | 0.02-0.15 MPa *2<br>0.1-0.85 MPa | 0.02-0.15 MPa<br>0.1-1.4 MPa<br>1.3-1.7 MPa |
|                                  |                  | 85% or less of inlet pressure (gauge pressure) |                                  |   |
| Minimum differential pressure    |                  | 0.05 MPa                                       |                                  |   |
| Maximum pressure reduction ratio |                  | 20:1   |                                  |   |
| Maximum temperature              |                  | 220°C  |                                  |   |
| Valve seat leakage               |                  | 0.1% or less of rated flow rate                |                                  |   |
| Material                         | Body             | Ductile cast iron                              |                                  |   |
|                                  | Main valve       | Stainless steel                                |                                  |   |
|                                  | Valve seat       | Stainless steel                                |                                  |   |
|                                  | Pilot valve      | Stainless steel                                |                                  |   |
|                                  | Pilot valve seat | Stainless steel                                |                                  |   |
| Diaphragm                        |                  | Stainless steel                                |                                  |   |
| Reduced pressure sensing pipe    |                  | Copper pipe Ø 8-2 m                            |                                  |   |
| Connection                       |                  | JIS Rc screwed                                 | JIS 20K RF flanged               | JIS 10K FF flanged<br>EN PN25 flanged       |

\*1 External sensing is standard. When installing the pressure reducing valve, be sure to connect the provided sensing pipe and joint.

Unless the sensing pipe is connected, the valve will not operate.

(Available with internal sensing type (nominal size: 15A to 100A) in different specifications. Note that Cv value of internal sensing type is lower than that of external sensing type.)

\*2 Available with the GP-2000L, reduced pressure of 0.01 to 0.02 MPa, from 15A to 100A, inlet pressure of 0.1 to 0.5 MPa and maximum pressure reduction of 50:1.

· Available with external pilot type.

· Available with ASME flanged.

\*\*\* Stock Item

\*last updated 11/20

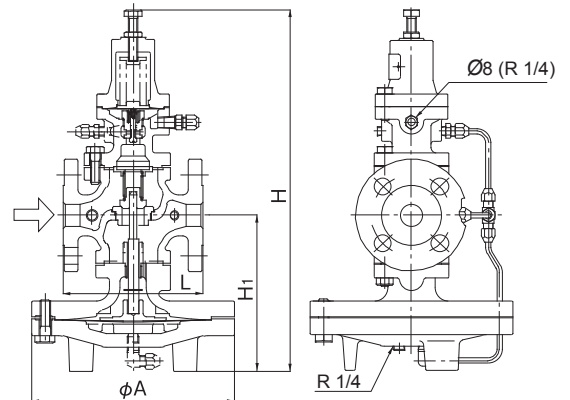
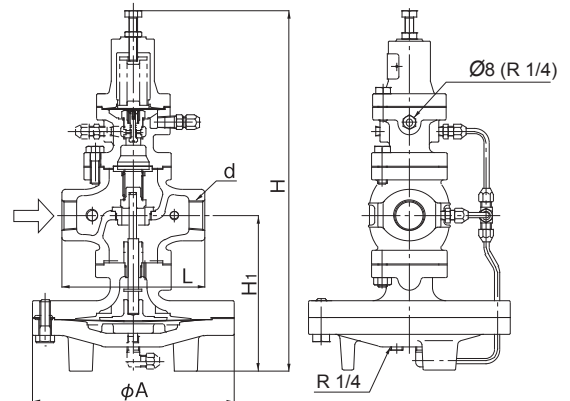
# GP-2000/GP-2000EN

### DIMENSIONS (MM) AND WEIGHTS (KG)

| · Screwed type |          |     |     |     |     |        |
|----------------|----------|-----|-----|-----|-----|--------|
| Nominal size   | d        | L   | H1  | H   | A   | Weight |
| 15A            | Rc 1/2   | 150 | 170 | 398 | 200 | 14.0   |
| 20A            | RC 3/4   | 150 | 170 | 398 | 200 | 14.0   |
| 25A            | Rc 1     | 160 | 175 | 404 | 226 | 18.5   |
| 32A            | Rc 1-1/4 | 180 | 192 | 434 | 226 | 21.5   |
| 40A            | Rc 1-1/2 | 180 | 192 | 434 | 226 | 21.5   |
| 50A            | Rc 2     | 230 | 216 | 498 | 276 | 33.0   |

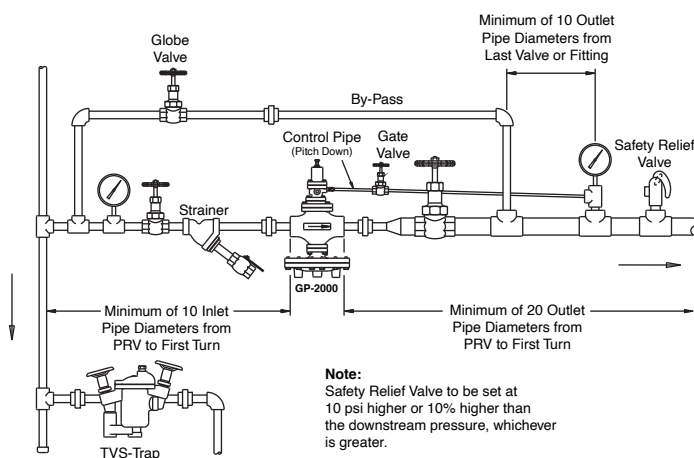
\* Available with NPT connection.

| · Flanged type (PN 25) |     |     |     |     |        |  |
|------------------------|-----|-----|-----|-----|--------|--|
| Nominal size           | L   | H1  | H   | A   | Weight |  |
| 15A                    | 150 | 170 | 398 | 200 | 15.7   |  |
| 20A                    | 150 | 170 | 398 | 200 | 16.4   |  |
| 25A                    | 160 | 175 | 404 | 226 | 20.8   |  |
| 32A                    | 180 | 192 | 434 | 226 | 24.7   |  |
| 40A                    | 200 | 192 | 434 | 226 | 25.6   |  |
| 50A                    | 230 | 216 | 498 | 276 | 38.1   |  |
| 65A                    | 290 | 251 | 552 | 352 | 66.7   |  |
| 80A                    | 310 | 264 | 575 | 352 | 73.0   |  |
| 100A                   | 350 | 321 | 658 | 401 | 114.3  |  |
| 125A                   | 400 | 321 | 658 | 401 | 115    |  |
| 150A                   | 480 | 414 | 814 | 502 | 234    |  |
| 200A                   | 469 | 414 | 814 | 502 | 242    |  |

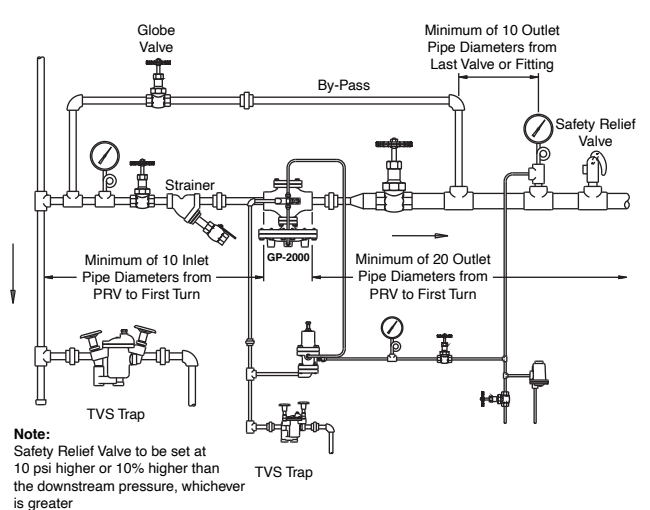


### Typical Single Stage Reduction Installation (For Steam)

#### Integral Mount



#### Remote Mount



\*last updated 02/23

# GP-2000/GP-2000EN

GP-2000 FLOW RATE TABLE

(kg/h)

| P <sub>1</sub> (MPa) | P <sub>2</sub> (MPa) | 15A   | 20A   | 25A   | 32A   | 40A   | 50A   | 65A    | 80A    | 100A   | 125A   | 150A   | 200A   |
|----------------------|----------------------|-------|-------|-------|-------|-------|-------|--------|--------|--------|--------|--------|--------|
| 2.0                  | 0.1-0.9              | 1,260 | 1,814 | 2,746 | 3,603 | 4,737 | 8,064 | 13,608 | 17,640 | 27,216 | 28,224 | 56,700 | 58,968 |
|                      | 1                    | 1,232 | 1,775 | 2,687 | 3,525 | 4,634 | 7,889 | 13,330 | 17,280 | 26,661 | 27,648 | 55,543 | 57,765 |
|                      | 1.2                  | 1,136 | 1,636 | 2,477 | 3,250 | 4,273 | 7,273 | 12,290 | 15,931 | 24,580 | 25,490 | 51,208 | 53,257 |
|                      | 1.4                  | 1,012 | 1,458 | 2,207 | 2,896 | 3,808 | 6,481 | 10,952 | 14,197 | 21,904 | 22,715 | 45,633 | 47,459 |
| 1.8                  | 0.1-0.8              | 1,140 | 1,641 | 2,485 | 3,260 | 4,286 | 7,296 | 12,312 | 15,960 | 24,624 | 25,536 | 51,300 | 53,352 |
|                      | 0.9                  | 1,113 | 1,603 | 2,426 | 3,183 | 4,185 | 7,125 | 12,039 | 15,606 | 24,078 | 24,969 | 50,162 | 52,169 |
|                      | 1                    | 1,067 | 1,537 | 2,327 | 3,053 | 4,014 | 6,832 | 11,544 | 14,965 | 23,089 | 23,944 | 48,102 | 50,026 |
|                      | 1.2                  | 954   | 1,374 | 2,081 | 2,730 | 3,590 | 6,111 | 10,325 | 13,385 | 20,651 | 21,416 | 43,024 | 44,745 |
|                      | 1.4                  | 803   | 1,157 | 1,751 | 2,298 | 3,021 | 5,143 | 8,690  | 11,265 | 17,380 | 18,024 | 36,210 | 37,658 |
| 1.6                  | 0.1-0.7              | 1,020 | 1,468 | 2,223 | 2,917 | 3,835 | 6,528 | 11,016 | 14,280 | 22,032 | 22,848 | 45,900 | 47,736 |
|                      | 1                    | 893   | 1,286 | 1,947 | 2,554 | 3,358 | 5,716 | 9,658  | 12,520 | 19,317 | 20,033 | 40,245 | 41,855 |
|                      | 1.3                  | 664   | 956   | 1,448 | 1,900 | 2,498 | 4,253 | 7,186  | 9,315  | 14,378 | 14,905 | 29,943 | 31,141 |
| 1.4                  | 0.1-0.6              | 900   | 1,296 | 1,962 | 2,574 | 3,384 | 5,760 | 9,720  | 12,600 | 19,440 | 20,160 | 40,500 | 42,120 |
|                      | 1                    | 702   | 1,011 | 1,531 | 2,009 | 2,642 | 4,497 | 7,599  | 9,851  | 15,199 | 15,762 | 31,664 | 32,931 |
|                      | 1.1                  | 620   | 893   | 1,352 | 1,773 | 2,331 | 3,969 | 6,706  | 8,694  | 13,413 | 13,910 | 27,945 | 29,062 |
| 1.2                  | 0.1-0.5              | 780   | 1,123 | 1,700 | 2,230 | 2,932 | 4,992 | 8,424  | 10,920 | 16,848 | 17,472 | 35,100 | 36,504 |
|                      | 1                    | 477   | 687   | 1,040 | 1,365 | 1,795 | 3,055 | 5,162  | 6,692  | 10,325 | 10,708 | 21,512 | 22,372 |
| 1.0                  | 0.1-0.4              | 660   | 950   | 1,438 | 1,887 | 2,481 | 4,224 | 7,128  | 9,240  | 14,256 | 14,784 | 29,700 | 30,888 |
|                      | 0.5                  | 635   | 914   | 1,385 | 1,817 | 2,388 | 4,066 | 6,870  | 8,906  | 13,740 | 14,249 | 28,626 | 29,771 |
|                      | 0.8                  | 435   | 627   | 950   | 1,246 | 1,638 | 2,789 | 4,713  | 6,109  | 9,426  | 9,775  | 19,637 | 20,423 |
| 0.9                  | 0.1-0.4              | 600   | 864   | 1,308 | 1,716 | 2,256 | 3,840 | 6,480  | 8,400  | 12,960 | 13,440 | 27,000 | 28,080 |
|                      | 0.5                  | 551   | 793   | 1,201 | 1,576 | 2,072 | 3,528 | 5,961  | 7,728  | 11,923 | 12,364 | 24,840 | 25,833 |
|                      | 0.7                  | 413   | 595   | 901   | 1,182 | 1,554 | 2,646 | 4,471  | 5,796  | 8,942  | 9,273  | 18,630 | 19,375 |
| 0.8                  | 0.1-0.3              | 540   | 777   | 1,177 | 1,544 | 2,030 | 3,456 | 5,832  | 7,560  | 11,664 | 12,096 | 24,300 | 25,272 |
|                      | 0.5                  | 462   | 665   | 1,007 | 1,322 | 1,738 | 2,958 | 4,998  | 6,480  | 9,997  | 10,368 | 20,828 | 21,662 |
| 0.7                  | 0.1-0.3              | 480   | 691   | 1,046 | 1,372 | 1,804 | 3,072 | 5,184  | 6,720  | 10,368 | 10,752 | 21,600 | 22,464 |
|                      | 0.5                  | 364   | 525   | 794   | 1,042 | 1,371 | 2,333 | 3,943  | 5,111  | 7,886  | 8,178  | 16,430 | 17,087 |
| 0.6                  | 0.1-0.2              | 420   | 604   | 915   | 1,201 | 1,579 | 2,688 | 4,536  | 5,880  | 9,072  | 9,408  | 18,900 | 19,656 |
|                      | 0.3                  | 395   | 570   | 862   | 1,132 | 1,488 | 2,533 | 4,280  | 5,549  | 8,561  | 8,878  | 17,836 | 18,550 |
|                      | 0.5                  | 248   | 357   | 541   | 710   | 934   | 1,590 | 2,686  | 3,482  | 5,373  | 5,572  | 11,195 | 11,643 |
| 0.5                  | 0.1-0.2              | 360   | 518   | 784   | 1,029 | 1,353 | 2,304 | 3,888  | 5,040  | 7,776  | 8,064  | 16,200 | 16,848 |
|                      | 0.3                  | 308   | 443   | 671   | 881   | 1,158 | 1,972 | 3,332  | 4,320  | 6,665  | 6,912  | 13,885 | 14,441 |
|                      | 0.4                  | 228   | 329   | 498   | 653   | 859   | 1,462 | 2,471  | 3,203  | 4,943  | 5,126  | 10,298 | 10,710 |
| 0.4                  | 0.05-0.15            | 300   | 432   | 654   | 858   | 1,128 | 1,920 | 3,240  | 4,200  | 6,480  | 6,720  | 13,500 | 14,040 |
|                      | 0.3                  | 206   | 297   | 450   | 591   | 777   | 1,323 | 2,235  | 2,898  | 4,471  | 4,636  | 9,315  | 9,687  |
| 0.3                  | 0.05-0.1             | 240   | 345   | 523   | 686   | 902   | 1,536 | 2,592  | 3,360  | 5,184  | 5,376  | 10,800 | 11,232 |
|                      | 0.2                  | 182   | 262   | 397   | 521   | 685   | 1,166 | 1,971  | 2,555  | 3,943  | 4,089  | 8,215  | 8,543  |
| 0.2                  | 0.05                 | 180   | 259   | 392   | 515   | 677   | 1,152 | 1,944  | 2,520  | 3,888  | 4,032  | 8,100  | 8,424  |
|                      | 0.1                  | 154   | 221   | 335   | 440   | 579   | 986   | 1,666  | 2,160  | 3,332  | 3,456  | 6,942  | 7,220  |
| 0.1                  | 0.05                 | 91    | 131   | 198   | 260   | 342   | 583   | 985    | 1,277  | 1,971  | 2,044  | 4,107  | 4,271  |

\*last updated 11/20