

FL81CAI

Self-priming centrifugal pump



APPLIICATIONS

FL81CAI food centrifugal pumps are used mainly for decanting liquids in the food, chemical and winery industries in applications where suction with load is not possible. The simplicity of the pump parts allows straightforward maintenance. The level of the finish and the pump design ensure a high degree of hygiene.

CHARACTERISTICS

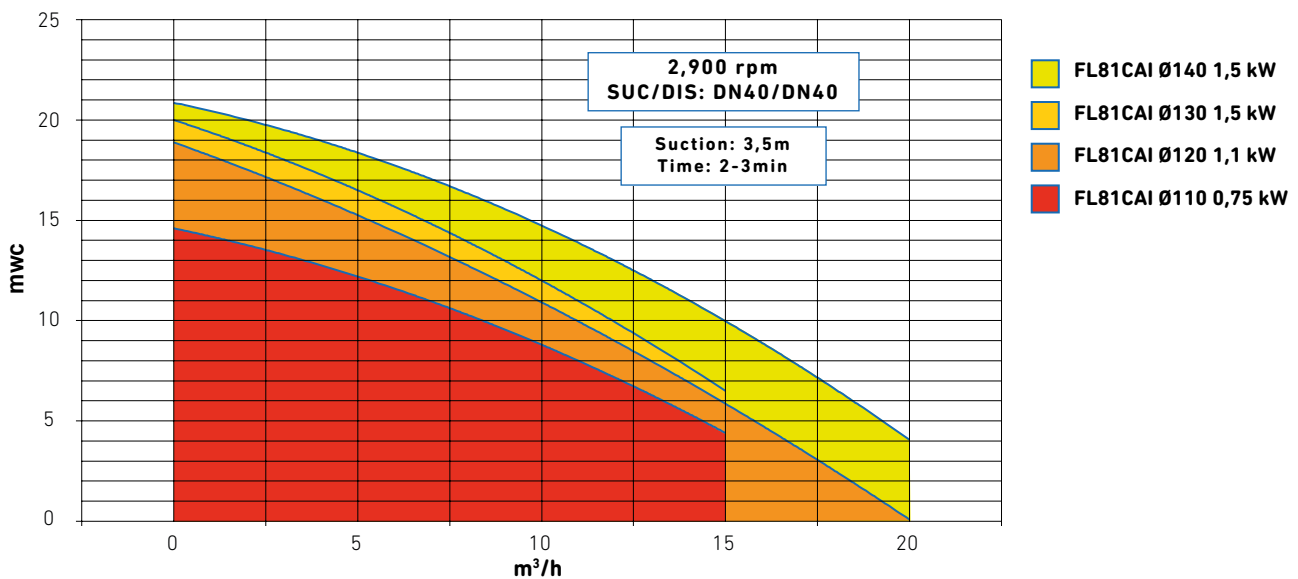
Level of finish: Foodstuff / Industrial
 Half-open impeller
 Hygienic seal
 Simplicity of parts
 BSP/DIN 11851 connections

OPTIONS

Open impeller
 Other connections: DIN 11861, CLAMP, SMS, RJT, etc.
 Trolley, platform
 Dual mechanical seal with thermosiphon cooling system
 Control panel

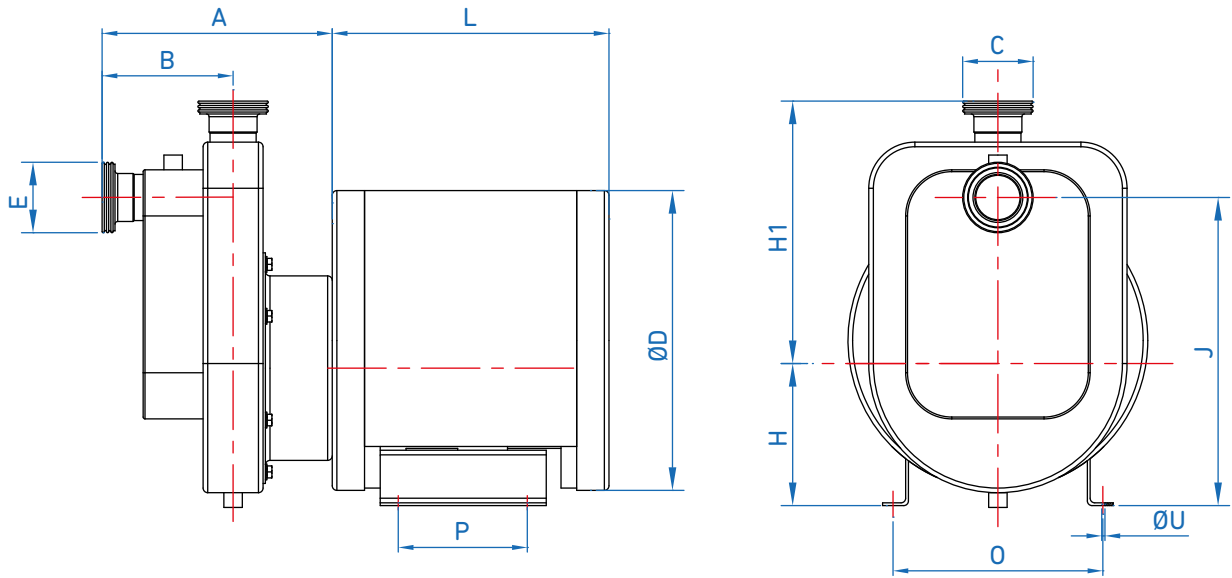


PERFORMANCE CURVES FL81CAI



(for other impeller and motor combinations, please ask)

DIMENSIONS AND CHARACTERISTICS OF FL81CAI MODEL



MODEL	MOTOR		DIMENSIONS												
	CV	kW	A	B	C	D	E	H	H1	J	L	O	P	U	
FL81CAI	1	0.75	225	130	DN40	Ø 250	DN40	140	240	290	250	215	135	Ø 10	
	1.5	1.1													
	2	1.5													
	3	2.2													

MATERIALS LIST

PUMP

Lamp

STAINLESS STEEL AISI 304

Body

Impeller

Shaft

Connections

STAINLESS STEEL AISI 316

MECHANICAL SEAL

Fixed part

SS

Silicon

SS

Rotatory part

Graphite

Silicon

Graphite

Gaskets

NBR

Viton

EPDM

(For other materials, please ask)

MOTOR

Protection IP55

50 Hz 220-380V/380-690V

FL82CAI

Self-priming centrifugal pump



APPLIICATIONS

FL82CAI food centrifugal pumps are used mainly for decanting liquids in the food, chemical and winery industries in applications where suction with load is not possible. The simplicity of the pump parts allows straightforward maintenance. The level of the finish and the pump design ensure a high degree of hygiene.

CHARACTERISTICS

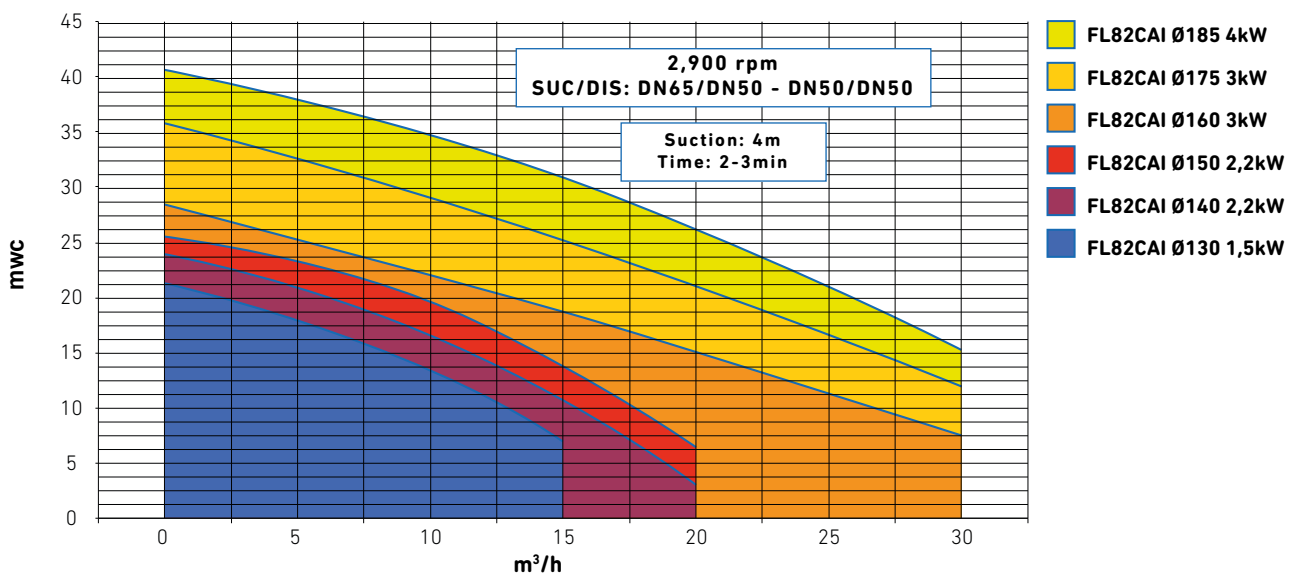
Level of finish: Foodstuff / Industrial
 Half-open impeller
 Hygienic seal
 Simplicity of parts
 BSP/DIN 11851 connections

OPTIONS

Open impeller
 Other connections: DIN 11861, CLAMP, SMS, RJT, etc.
 Trolley, platform
 Dual mechanical seal with thermosiphon cooling system
 Control panel

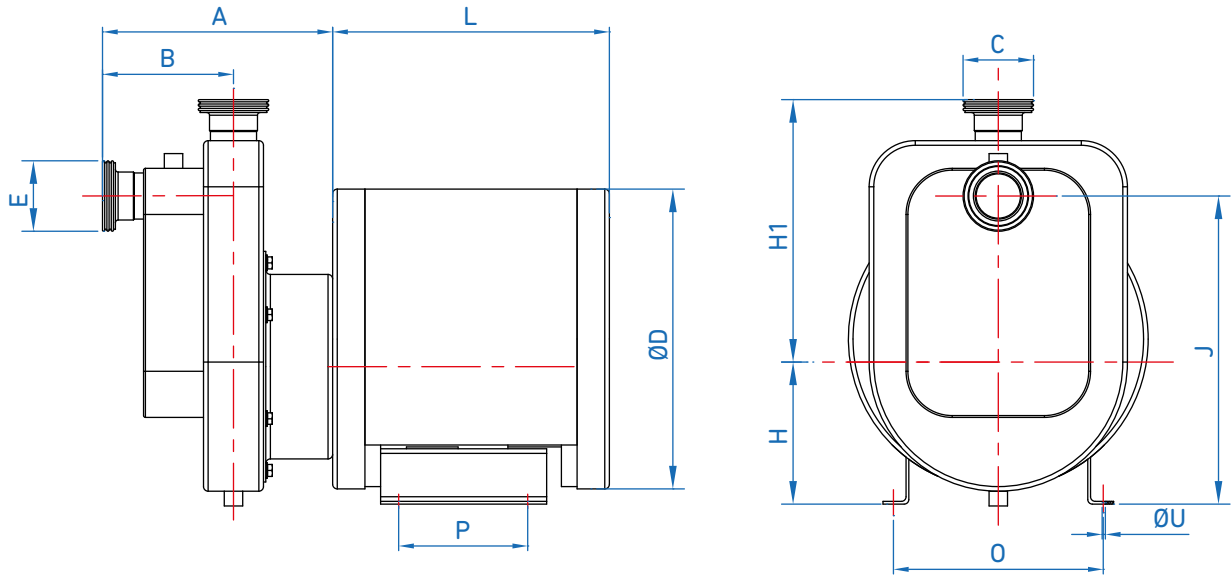


PERFORMANCE CURVES FL82CAI



(for other impeller and motor combinations, please ask)

DIMENSIONS AND CHARACTERISTICS OF FL82CAI MODEL



MODEL	MOTOR		DIMENSIONS												
	CV	kW	A	B	C	D	E	H	H1	J	L	O	P	U	
FL82CAI	2	1.5	250	175	DN50	Ø325	DN50	150	240	425	300	215	200	Ø11	
	3	2.2													200
	4	3													
	5.5	4													
	7.5	5.5													

MATERIALS LIST

PUMP

Lamp

STAINLESS STEEL AISI 304

Body

Impeller

Shaft

Connections

STAINLESS STEEL AISI 316

MECHANICAL SEAL

Fixed part

SS

Silicon

SS

Rotatory part

Graphite

Silicon

Graphite

Gaskets

NBR

Viton

EPDM

(For other materials, please ask)

MOTOR

Protection IP55

50 Hz 220-380V/380-690V

FL83CAI

Self-priming centrifugal pump



APPLIICATIONS

FL83CAI food centrifugal pumps are used mainly for decanting liquids in the food, chemical and winery industries in applications where suction with load is not possible. The simplicity of the pump parts allows straightforward maintenance. The level of the finish and the pump design ensure a high degree of hygiene.

CHARACTERISTICS

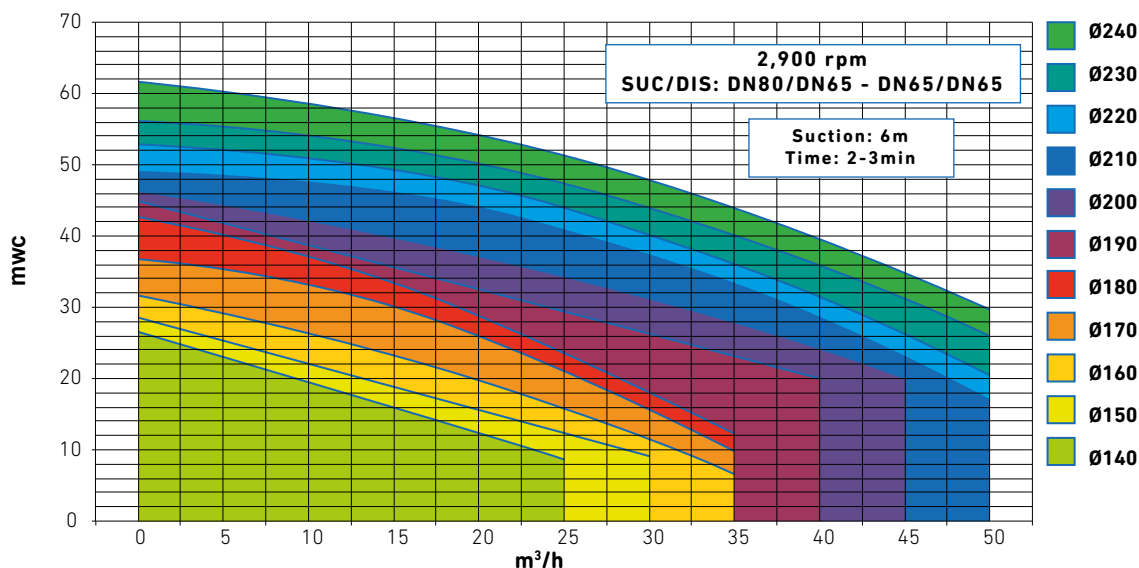
Level of finish: Foodstuff / Industrial
 Half-open impeller
 Hygienic seal
 Simplicity of parts
 BSP/DIN 11851 connections

OPTIONS

Open impeller
 Other connections: DIN 11861, CLAMP, SMS, RJT, etc.
 Trolley, platform
 Dual mechanical seal with thermosiphon cooling system
 Control panel

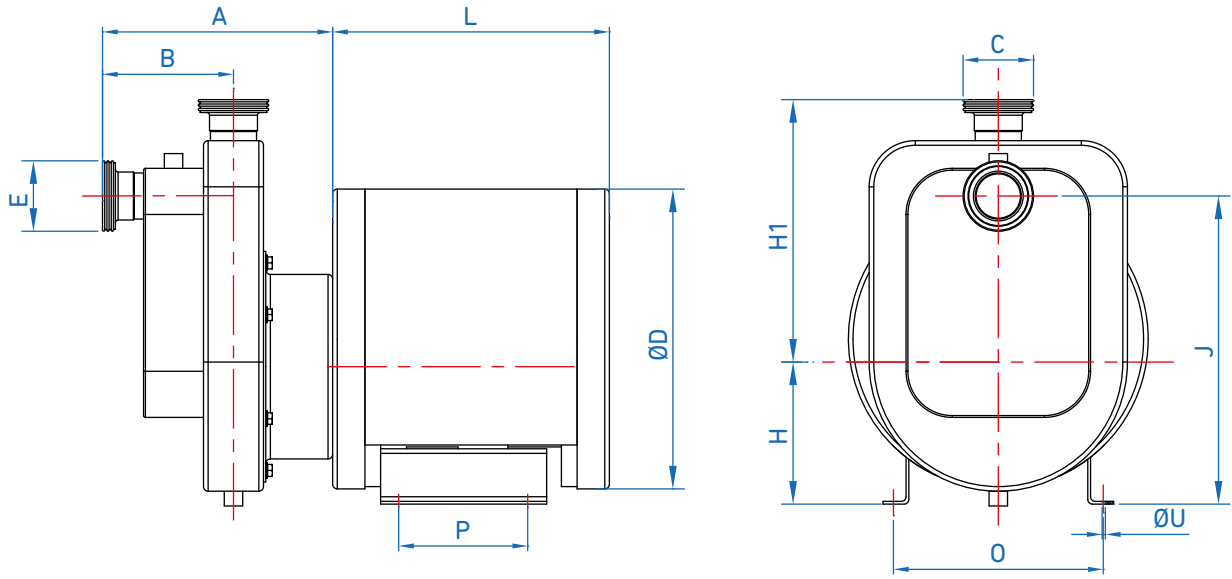


PERFORMANCE CURVES FL83CAI



(for other impeller and motor combinations, please ask)

DIMENSIONS AND CHARACTERISTICS OF FL83CAI MODEL



MODEL	MOTOR		DIMENSIONS												
	CV	kW	A	B	C	D	E	H	H1	J	L	O	P	U	
FL83CAI	7.5	5.5	325	175	DN65	Ø375	DN65	192	390	450	500	335	500	Ø13	
	10	7.5													
	12	11	550	200		Ø475	DN80	220	400						
	15	15													
	20	18.5													
	25	22													

MATERIALS LIST

PUMP

Lamp

STAINLESS STEEL AISI 304

Body

Impeller

Shaft

Connections

STAINLESS STEEL AISI 316

MECHANICAL SEAL

Fixed part

SS

Silicon

SS

Rotatory part

Graphite

Silicon

Graphite

Gaskets

NBR

Viton

EPDM

(For other materials, please ask)

MOTOR

Protection IP55

50 Hz 220-380V/380-690V