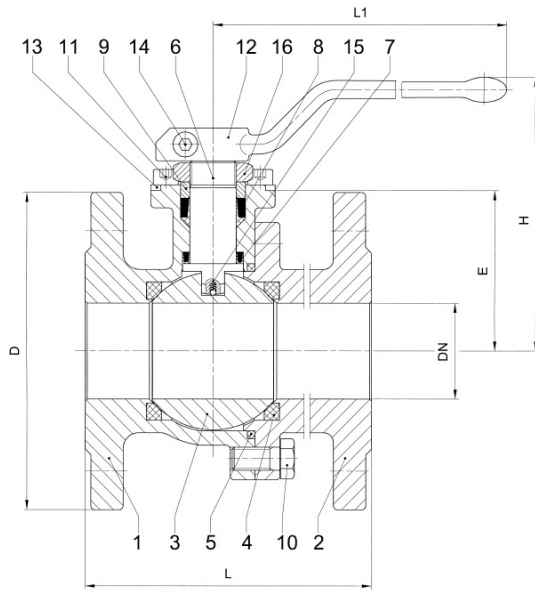


Two-piece ball valve, floating ball, soft seated



**Flanged ball valve**  
**full bore**  
**face to face acc. to EN 558, GR. 1**  
**face to face acc. to EN 558, GR. 27**  
**flanges acc. to EN 1092**

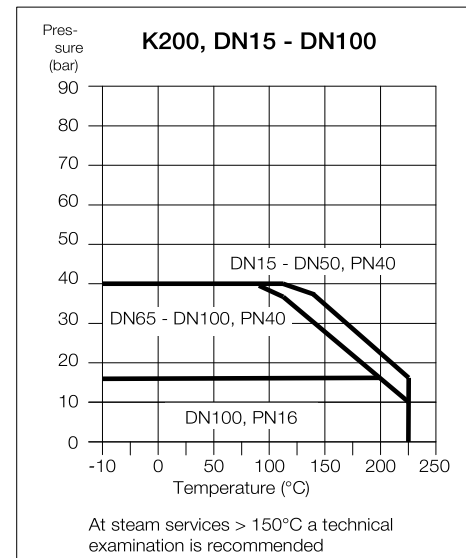
Specification:  
Two-piece ball valve with flanges acc. to EN 1092, face to face dimensions acc. to EN 558, GR.1/GR.27, full bore, blow-outproof stem, vacuum-tight, body material stainless steel (1.4408) or carbon steel (1.0619), antistatic device, free of non ferrous metals, seat full chambered, stem packing Graphite/KFGN/KFAM cone ring system dynamic loaded adjustable, top flange DIN EN ISO 5211, approved by PED, certified acc. to GERMAN clean air act VDI 2440, Fire-Safe acc. to API 607 and DIN EN ISO 10497, with lever.

Marking: INTEC K200

No.	Part	Material	Material
Standard design			
1	body	1.0619	1.4408
2	cap	1.0619	1.4408
3	ball	1.4408	
4	seat	KFGN/KFM	
5	body seal	KF	
6	stem	1.4462	
7	below seal	KFGN/Graphite	
8	upper seal	KFAM/Graphite	
9	bearing	PEEK	
10	hex. screw	A4-70	
11	allen screw	A2-70	
12	lever	1.4408/1.4308/steel zincplated	
13	stopper	1.4301	
14	allen screw	A2-70	
15	antistatic element	1.4401/1.4571/1.4404	
16	hex. nut self-locking	A2/1.4301	
Fire-Safe design			
5	combined body seal	KF-Graphite	
9	Fire-Safe seal	Graphite	
	ring	1.4571/1.4404	
	thrust washer	PEEK	

Dimensions

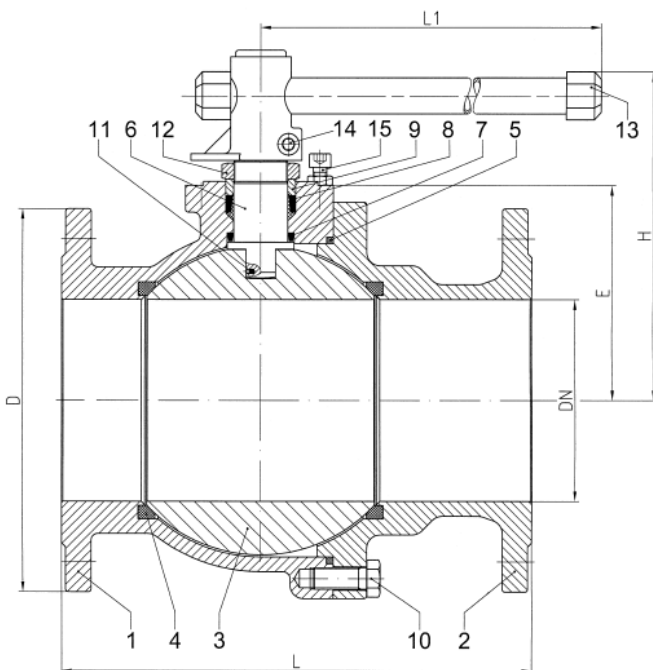
DN mm	PN	dimensions (mm)						top flange ISO	torque Nm**	weight kg	
		H	L1	L GR.1	L GR.27	D	E			GR.1	GR.27
15	40	95	160	130	115	95	39.5	F05	9	3.0	2.9
20	40	105	160	150	120	105	46.0	F05	10	4.0	3.7
25	40	114	180	160	125	115	49.5	F05	14	4.9	4.6
32	40	130	180	180	130	140	59.0	F05	17	6.7	6.4
40	40	135	300	200	140	150	76.0	F07	37	9.3	8.8
50	40	143	300	230	150	165	83.5	F07	45	13.0	12.1
65	40	155	300	290	170	185	94.0	F07	65	17.0	16.0
80	40	197	500	310	180	200	102.5	F10	109	26.0	23.0
100	16	215	500	350	190	220	120.5	F10	148	33.0	30.0
100	40	215	500	350	190	235	120.5	F10	148	34.0	32.0



**Ordering example:**  
**INTEC K200, DN50, PN40, GR.27,**  
**1.4408, Fire-Safe**

\*\* Necessary torque measured with treated water at Δ P = 16 bar and room temperature.

Two-piece ball valve, floating ball, soft seated

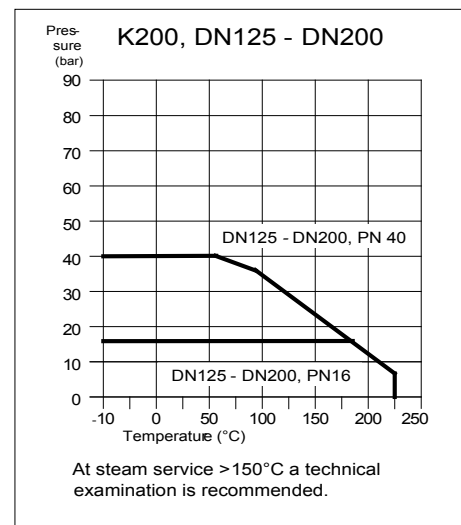


**Flanged ball valve**  
**full bore**  
**face to face acc. to EN 558, GR. 27**  
**flanges acc. to EN 1092**

Specification:  
Two-piece ball valve with flanges acc. to EN 1092, face to face dimensions acc. to EN 558, GR.27, full bore, blow-out-proof stem, vacuum-tight, body material stainless steel (1.4408) or carbon steel (1.0619), antistatic device, free of non ferrous metals, seat full chamfered, stem packing Graphite/ KFGN/KFAM cone ring system dynamic loaded adjustable, top flange DIN EN ISO 5211, approved by PED, certified acc. to GERMAN clean air act VDI 2440, Fire-Safe acc. to DIN EN ISO 10497, with lever.

Marking: INTEC K200

No.	Part	Material	Material
<b>Standard design</b>			
1	body	1.0619	1.4408
2	cap	1.0619	1.4408
3	ball	1.4408	
4	seat	KFGN/KFM	
5	body seal	KF	
6	stem	1.4462	
7	below seal	KFGN/Graphite	
8	upper seal	KFAM/Graphite	
9	bearing	PEEK	
10	hex. screw	A4-70	
11	antistatic element	1.4401/1.4571/1.4404	
12	hex. screw selflocking	A2/1.4301	
13	lever	1.4408/1.4308/steel zincplated	
14	allen screw	A2-70	
15	stopper	A2	
<b>Fire-Safe design</b>			
5	combined body seal	KF-Graphite	
9	Fire-Safe seal	Graphite	
	ring	1.4571/1.4404	
	thrust washer	PEEK	



**Ordering example:**  
**INTEC K200, DN150, PN40, GR.27,**  
**1.4408, Fire-Safe**

**Dimensions**

DN mm	PN	dimensions (mm)					top flange ISO	torque Nm**	weight kg
		H	L1	L	D	E			
125	16	263	700	325	250	164	F12	260	56
125	40	263	700	325	270	164	F12	260***	58
150	16	265	700	350	285	181	F12	286	80
150	40	265	700	350	300	181	F12	286***	85
200	16	340	1000	400	340	225	F14	442	152
200	40	340	1000	400	375	225	F14	442***	160

\*\* Necessary torque measured with treated water at Δ P = 16 bar and room temperature.

\*\*\* PN 40 gearbox recommended.

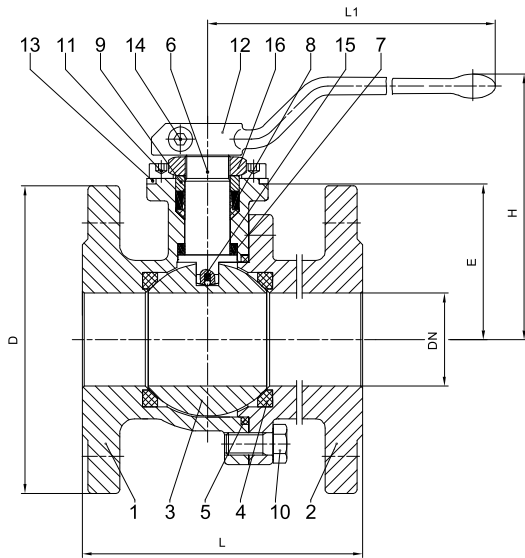


# Ball VALVES INTEC

K200, 1/2" - 4", Class 150/300



## Two-piece ball valve, with floating ball, soft seated

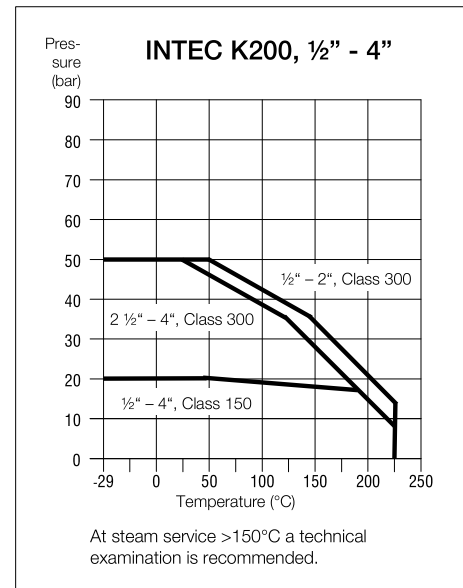


**Flanged ball valve**  
**full bore**  
**face to face acc. to ANSI B 16.10**  
**flanges acc. to ANSI B 16.5**

Specification:  
 Two-piece ball valve,  
 flanges acc. to ANSI B 16.5,  
 face to face dimensions acc. to ANSI B 16.10,  
 full bore, blow-outproof stem, body material  
 stainless steel (ASTM A351-CF8M) or  
 carbon steel (ASTM A216-WCB),  
 antistatic device, free of non ferrous metals,  
 seat full chambered, stem packing Graphite/  
 KFGN/KFAM cone ring system dynamic  
 loaded adjustable, top flange DIN EN ISO 5211,  
 approved by PED, certified acc. to GERMAN  
 clean air act VDI 2440, Fire-Safe acc. to API 607  
 and DIN EN ISO 10497, with lever.

Marking: INTEC K200

No.	Part	Material	Material
Standard design			
1	body	A216-WCB	ASTM A351-CF8M
2	cap	A216-WCB	ASTM A351-CF8M
3	ball	1.4408 (ASTM A351-CF8M)	
4	seat	KFGN/KFM	
5	body seal	KF	
6	stem	1.4462 (A479 UNS S31803)	
7	below seal	KFGN/Graphite	
8	upper seal	KFAM/Graphite	
9	bearing	PEEK	
10	hex. screw	A4-70 (A193-B8M)	
11	allen screw	A2-70 (A193-B8)	
12	lever	1.4408 (ASTM A351-CF8M)/1.4308 (ASTM A351-CF8)	
13	stopper	1.4301 (AISI 304)	
14	allen screw	A2-70 (A193-B8)	
15	antistatic element	1.4401 (AISI 316)/1.4571 (AISI 316 Ti)/1.4404 (AISI 316 L)	
16	hex. nut self-locking	A2/1.4301 (AISI 304)	
Fire-Safe design			
5	combined body seal	KF-Graphite	
9	Fire-Safe seal	Graphite	
	ring	1.4571 (AISI 316 Ti)/1.4404 (AISI 316 L)	
	thrust washer	PEEK	



**Ordering example:**  
**INTEC K200, 2", Class 300,**  
**CF8M, Fire-Safe**

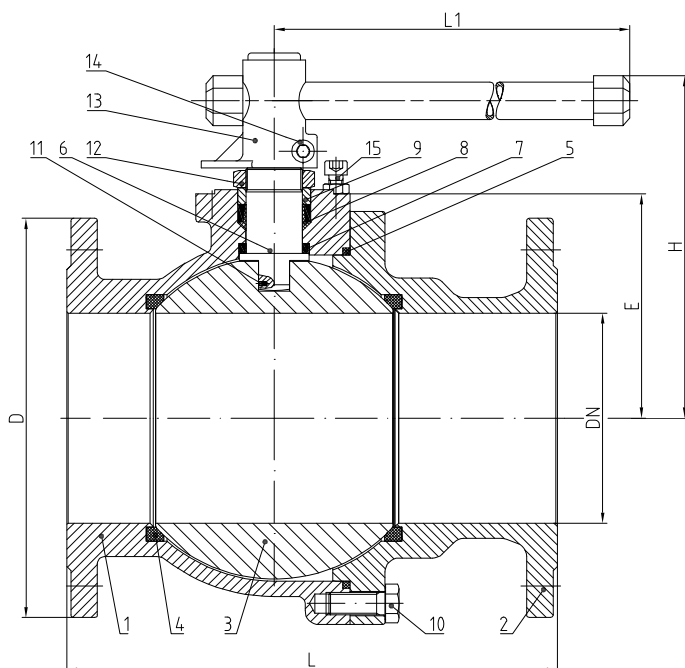
### Dimensions

NPS inch	dimensions		L					top flange ISO	torque		ca. weight	
	H	L1	150 lbs.	300 lbs.	150 lbs.	300 lbs.	E		Nm** 150 lbs.	Nm** 300 lbs.	kg 150 lbs.	kg 300 lbs.
1/2"	95	160	108	140	89	95	39.5	F05	9	10	2.1	2.9
3/4"	105	160	117	152	98	117	46	F05	11	13	3.0	4.2
1"	114	180	127	165	108	124	49.5	F05	14	18	4.1	5.0
1 1/4"	130	180	140	178	117	133	59	F05	18	25	5.0	7.0
1 1/2"	135	300	165	190	127	156	76	F07	39	52	8.0	10.5
2"	143	300	178	216	152	165	83.5	F07	48	70	11.8	13.0
2 1/2"	155	300	190	241	178	190	94	F07	71	118	17.0	20.0
3"	197	500	203	283	190	210	102.5	F10	121	215	24.4	31.0
4"	215	500	229	305	229	254	120.5	F10	170	333	35.0	47.0

\*\*Necessary torque measured with treated water at Δ P acc. to pressure class and room temperature



Two-piece ball valve, with floating ball, soft seated

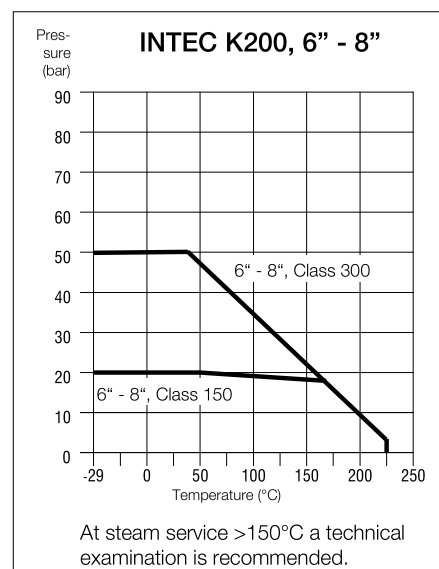


**Flanged ball valve**  
**full bore**  
**face to face acc. to ANSI B 16.10**  
**flanges acc. to ANSI B 16.5**

Specification:  
Two-piece ball valve, flanges acc. to ANSI B 16.5, face to face dimensions acc. to ANSI B 16.10, full bore, blowout-proof stem, body material stainless steel (ASTM A351-CF8M) or carbon steel (ASTM A216-WCB), antistatic device, free of non ferrous metals, seat full chambered, stem packing Graphite/ KFGN/KFAM cone ring system dynamic loaded adjustable, top flange DIN EN ISO 5211, approved by PED, certified acc. to GERMAN clean air act VDI 2440, Fire-Safe acc. to DIN EN ISO 10497, with lever.

Marking: INTEC K200

No.	Part	Material	Material
Standard design			
1	body	A216-WCB	ASTM A351-CF8M
2	cap	A216-WCB	ASTM A351-CF8M
3	ball	1.4408 (ASTM A351-CF8M)	
4	seat	KFGN/KFM	
5	body seal	KF	
6	stem	1.4462 (A479 UNS S31803)	
7	below seal	KFGN/Graphite	
8	upper seal	KFAM/Graphite	
9	bearing	PEEK	
10	hex. screw	A4-70 (A193-B8M)	
11	antistatic element	1.4401 (AISI 316)/1.4571 (AISI 316 Ti)/1.4404 (AISI 316 L)	
12	hex. nut self-locking	A2/1.4301 (AISI 304)	
13	lever	1.4408 (ASTM A351-CF8M)/1.4308 (ASTM A351-CF8)	
14	allen screw	A2-70 (A193-B8)	
15	stopper	1.4301 (AISI 304)	
Fire-Safe design			
5	combined body seal	KF-Graphite	
	Fire-Safe seal	Graphite	
9	ring	1.4571 (AISI 316 Ti)/1.4404 (AISI 316 L)	
	thrust washer	PEEK	



**Ordering example:**  
**INTEC K200, 6", Class 300,**  
**CF8M, Fire-Safe**

**Dimensions**

NPS inch	dimensions (mm)		L 150 lbs.	L 300 lbs.	D 150 lbs.	D 300 lbs.	E	top flange ISO	torque		ca. weight	
	H	L1							Nm*	Nm*	kg 150 lbs.	kg 300 lbs.
6"	280	700	394	403	279	318	181	F12	380	847**	89.0	on request
8"	340	1000	457	502	343	381	225	F14	742	1731**	145.0	on request

\* Necessary torque measured with treated water at Δ P acc. to pressure class and room temperature.

\*\* Class 300 gearbox recommended.