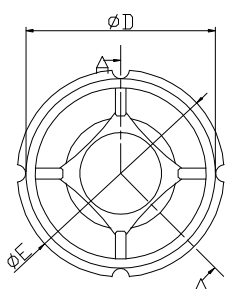


## DISC CHECK VALVE

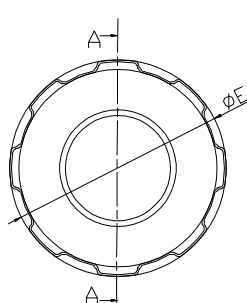
Wafer Type 901



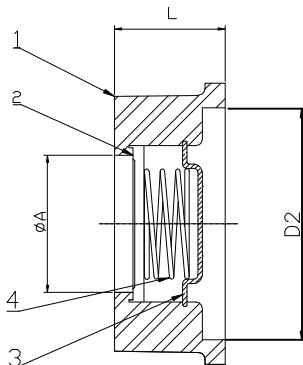
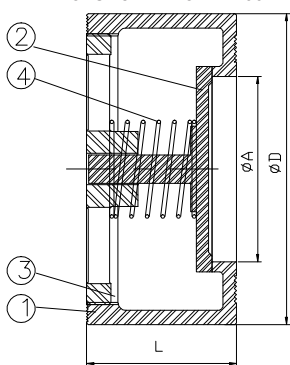
45° section  
for size DN15~DN65



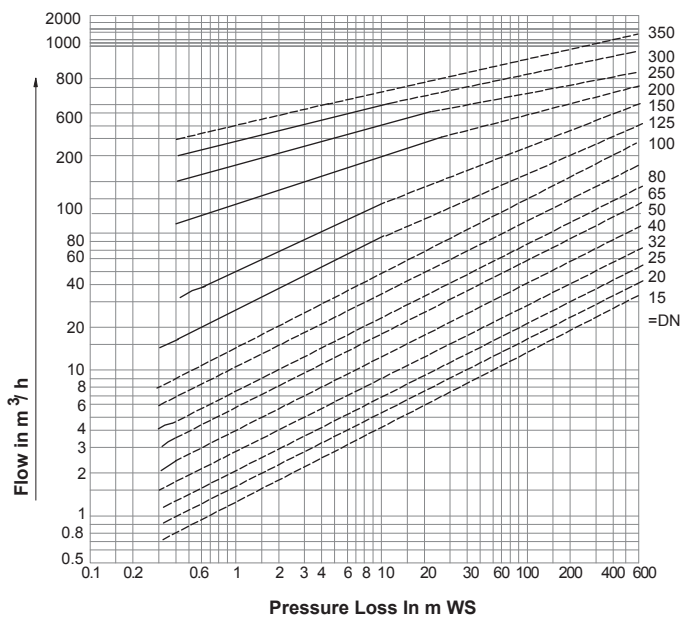
90° section  
for size DN80~DN100



for size DN125~DN200



Pressure Loss Curves  
(Referred to Water at 20 °C)



Dimensions (mm)

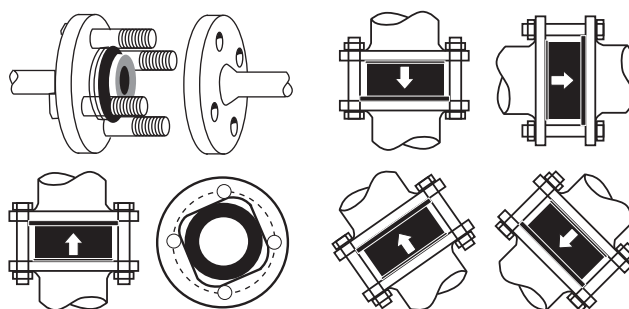
DN	inch	ØA	ØD	ØD2	ØE	L	W(kg)
15	1/2"	15	42	34	51	16	0.1
20	3/4"	20	47	37	61	19	0.16
25	1"	25	56	46	71	22	0.28
32	1-1/4"	32	73.5	63	80	28	0.52
40	1-1/2"	38	87	76	92	31.5	0.7
50	2"	50	97	83	107	40	1.1
65	2-1/2"	62	117	103	127	46	1.58
80	3"	76.5	133	115	142	50	1.76
100	4"	96	152	135	168	60	3.3
125	5"	105	187			90	7.4
150	6"	130	217			105	10.4
200	8"	170	273			140	17.4
250	10"	200	330			220	43.0
300	12"	225	375			250	70.0
350	14"	270	440			280	110.0

Material

No	Description	Material
1	Body	1.4408
2	Disc	1.4408
3	Spring Holder	CF8M
4	Spring	316

DN (mm)	DN (inch)	Minimum opening pressure std. (x0.01=kg/cm <sup>2</sup> )		
		↑	→	↓
15	1/2"	25	23	21
20	3/4"	25	23	21
25	1"	25	23	21
32	1-1/4"	27	24	21
40	1-1/2"	29	25	21
50	2"	29	25	21
65	2-1/2"	31	25	21
80	3"	32	26	21
100	4"	33	27	21
125	5"	55	45	33
150	6"	70	60	33
200	8"	110	90	33
250	10"	200	120	60
300	12"	300	150	80
350	14"	500	250	100

Installation : In any position



# DISC CHECK VALVE

## 901 Series Wafer Type

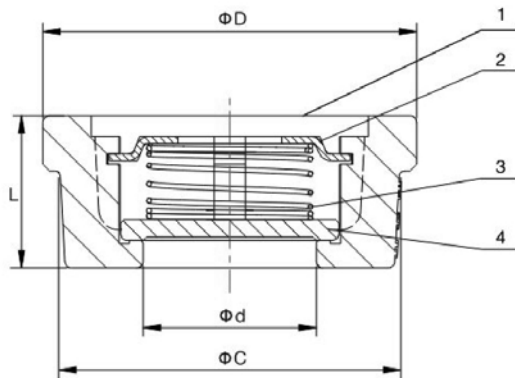


**NEW VERSION!**



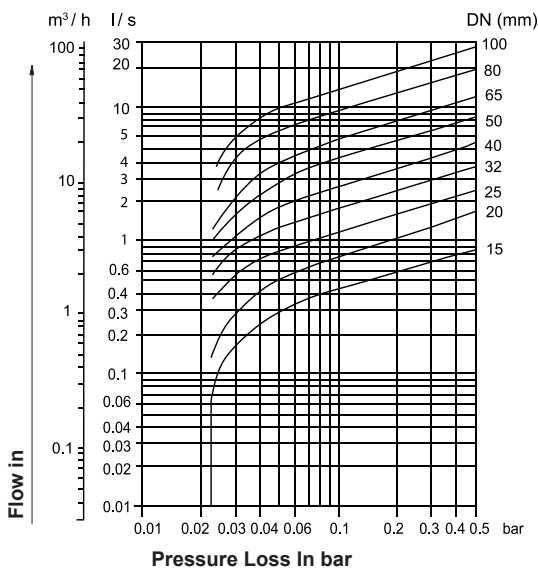
### TECHNICAL PARAMETERS

- Nominal Pressure : PN40
- Valve Specifications : DN15~DN100
- Medium Temperature : -20°C - +300°C
- Connection Type : Wafer type
- Body : CF8M
- Seal Material : Metal-to-Metal seal
- Flange Standard : DIN PN16, 25, 40 ANSI 150/300 Lbs / JIS 10K
- Structure Length : DIN3202 - K4
- Minimum Open Pressure : 35 mbar



Model: 901 Material		
No	Description	Material
1	Body	CF8M
2	Disc	CF8M
3	Spring holder	SS316
4	Spring	SS316

Size	DN15	DN20	DN25	DN32	DN40	DN50	DN65	DN80	DN100
ØD	39	46	54	70	80	94	112	132	150
Ød	15	20	25	32	40	46	62	75	86
ØC	34	40	50	62	70	85	100	120	140
L	16	19	22	28	32	40	46	50	60



DN (mm)	DN (inch)	Minimum opening pressure std. (mbar)		
		↑	→	↓
15	1/2"	50	45	40
20	3/4"	36	32	28
25	1"	34	31	27
32	1-1/4"	34	30	26
40	1-1/2"	35	30	26
50	2"	38	31	25
65	2-1/2"	35	28	21
80	3"	36	28	21
100	4"	37	28	20

