

SS CASE BRASS PRESSURE GAUGES



SPECIAL FEATURES

Standard Followed ASME-B 40.1
Build in Stabilizer Movement
Dry or Liquid Version
40mm Temperature Compensated Blow Out Disc
IP 65

SPECIFICATIONS

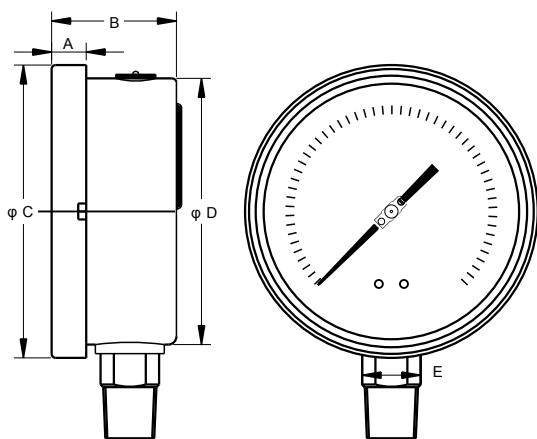
MAKE SS CASE BRASS PRESSURE GAUGE,BOURDON TYPE

NOMINAL SIZE : 100mm
MOUNTING : Direct Bottom Connection
CONNECTION : 1/2"NPT(M)
RANGE : 0-6 bar/psi , 0-10 bar/psi , 0-16 bar /psi
ACCURACY : + 1.0% of full scale
AMBIENT TEMPERATURE : -20°C to + 65°C
PROCESS TEMPERATURE : Max.248°F(120°C)
OPERATING PRESSURE : 75% of the scale value
OVER PRESSURE LIMIT : 125% of max scale value
CASE : AISI 304 SS
BOURDON : BRASS
SOCKET : BRASS
MOVEMENT : BRASS
JOINT : Alloy brazing / soldering
DIAL : Aluminium
POINTER : Micro zero adjustable
WINDOW : Safety Glass
OPTION : With restrictor screw



Remarks

If the pressure gauge filled glycerine oil , it can be used from -20°C to 100°C



NS	A	B	φ C	φ D	E	Weight (lbs)
4"	0.5"	1.87"	4.4"	4"	0.87"	1.28



RING SYPHON



SPECIAL FEATURES

Pigtail, Coil and "U" Type Shapes
Maximum Temperature up to 400°C
Nominal Pressure up to 160 bar
Tig Welded & Hydro Tested
Made with Seamless Pipe.

SPECIFICATIONS

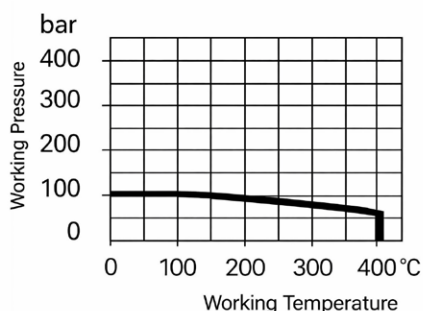
Syphons are used mainly to protect Pressure Instruments, Gauges, Switches and Transmitters directly coming in contact with high temperature process fluids or vapours. These are mounted between process and Pressure Instrument, They reduce process pulsation and generate cooling effect to save the Instrument.



PIPE Diameter & Wall Thickness 22mm*3mm
INSTRUMENT CONNECTION 1/2"NPT(M)
PROCESS CONNECTION 1/2"NPT(M)

O TYPE

Body Material	Size	Pressure Rating (Bar)	Temp.Rating (°C)
Steel with Zinc , Sch.80	1/2" NPT	206.84	204.44



PULSATION DAMPENER ADJUSTABLE NEEDLE TYPE



SPECIAL FEATURES

Designed to protect Pressure Instruments from sudden Pressure changes & Fluctuation.

STANDARD VERSION

Working Pressure: Up to 400 kg/cm²
Working Temperature : -20°C to 120°C
Instrument Connection : 1/2"NPT(F)
Process Connection: 1/2" NPT M)
Material : AISI 316 SS

APPLICATIONS

Hydraulic Machines, Compressors, Process Plants,
Clean Air, Gases & Non Crystallized Liquids.

